



# **EIT ICT Labs 2014**

**More than 3 years of experience in:  
Bringing ICT Innovations to Life  
Empowering ICT Top Talents for the Future**

**Dr.-Ing. Udo Bub  
Managing Director EIT ICT Labs Germany GmbH**

# EIT and EIT ICT Labs Tackling the European Paradox



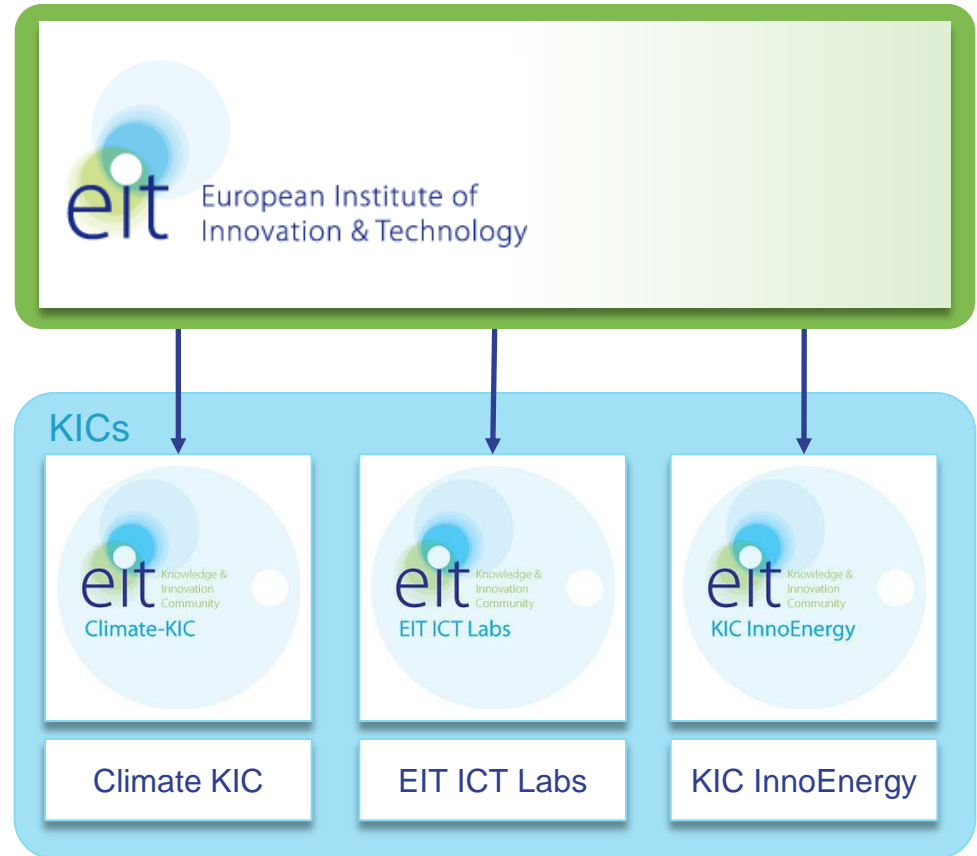
The **European Paradox** refers to the presumption that **EU member states** play a leading global role in terms of **top-level scientific output**, but lag behind in the ability of **converting this strength into wealth-generating innovations**.

- The EIT was established as **a new EU instrument** for promoting innovation in Europe
- It does not replace other existing EU initiatives (e.g. EU Framework Programmes), but adds to them by setting its **focus on bringing research results to market**

# The EIT and its KICs



- The **European Institute of Innovation & Technology (EIT)** was legally established in 2008 as an independent agency within the EU
- It funds **Knowledge and Innovation Communities (KICs)**
  - Official call and selection of the first three KICs in 2009
  - First KICs fully operational since December 2010

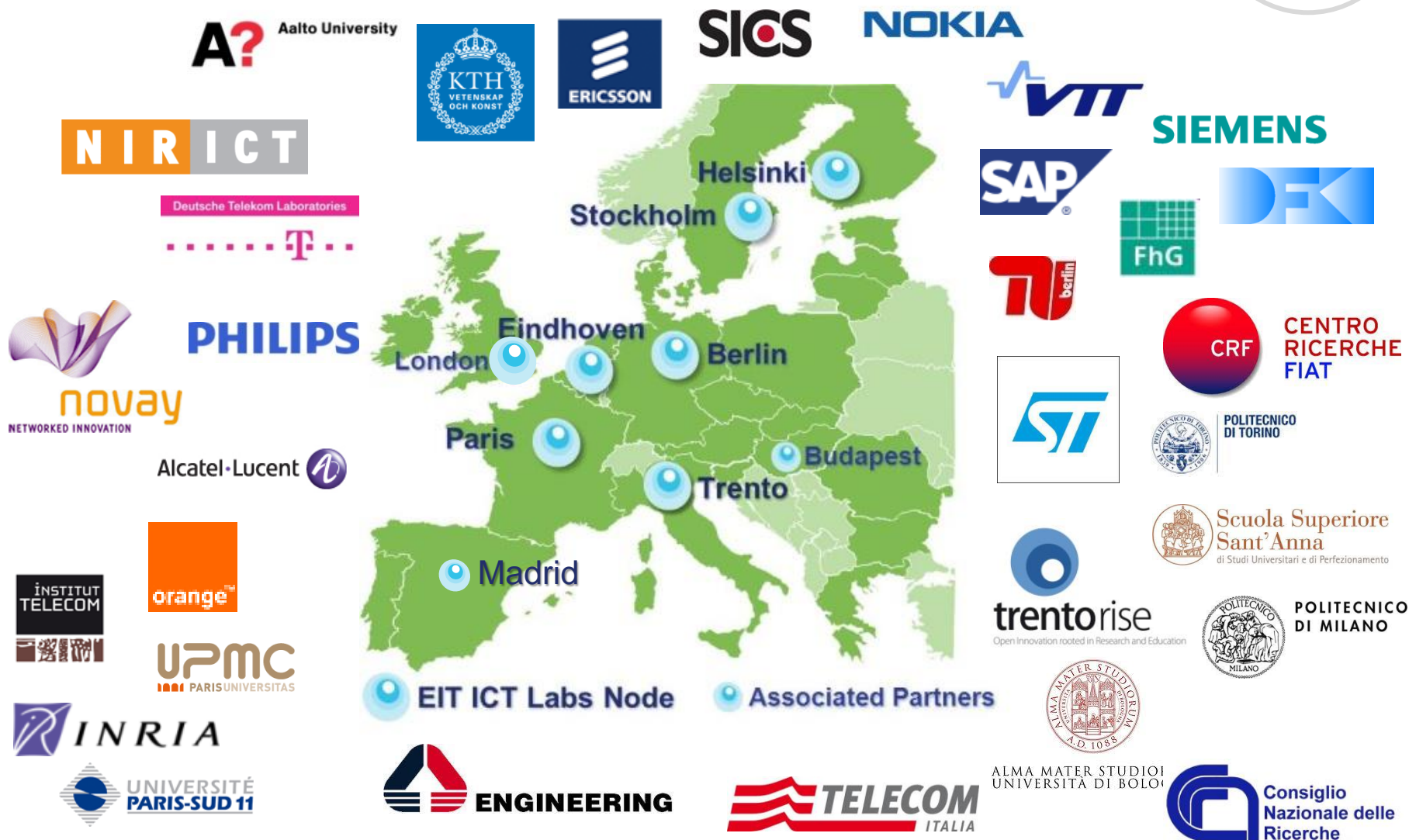


# Co-Location Centers European Innovation Hotspots

- EIT ICT Labs operates from **Co-location Centers (CLCs)** in 7 nodes
- CLCs are **places** where individuals from different types of organisations and cultures **work together face-to-face** and move forward effectively towards KIC goals
- CLCs are equipped with state-of-the-art communication technologies that facilitate **cross-node collaboration**



# EIT ICT Labs Strategic Partners



# Partners of the German Node



## Core Partners

- Deutsche Telekom
- DFKI
- Fraunhofer Gesellschaft
- SAP
- Siemens
- TU Berlin



## Affiliate Partners

- EICT GmbH
- Fortiss
- Karlsruhe Institute of Technology
- Saarland University
- TU Darmstadt
- TU München, CDTM



# The Berlin Co-Location Center



- Association: **EIT ICT Labs Germany GmbH**
- The Berlin CLC is located on campus of **TU Berlin**



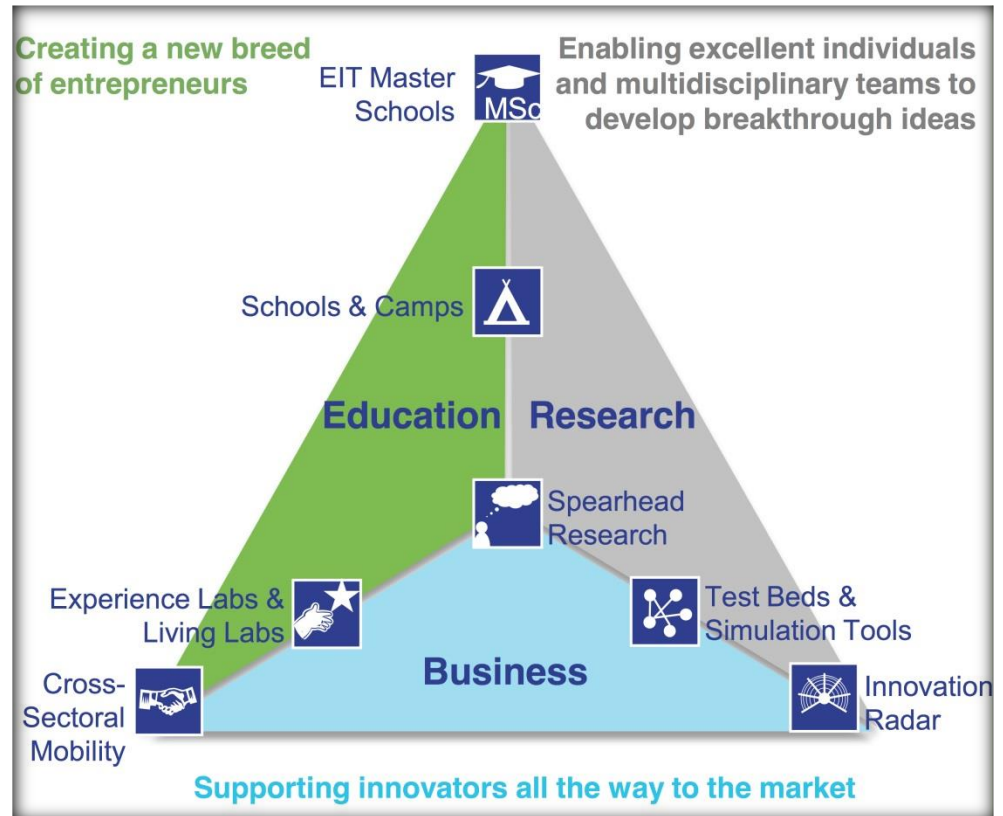
- Office space: 500m<sup>2</sup> of which 330m<sup>2</sup> are meeting and lecture areas, partly with movable walls resulting in a large conference room seating up to 100 persons, flexible desk space for guests available
- Proximity of EIT ICT Labs partners:
  - Building: **Deutsche Telekom Laboratories, Technische Universität Berlin**
  - City & Region: **DFKI, Fraunhofer-Gesellschaft**
  - Country: **SAP, Siemens**
  - Selected Affiliates: **Karlsruhe Institute of Technology, TU Darmstadt, TU Munich, Saarland University, and others**

# EIT ICT Labs Strategy

## Integrating the Knowledge Triangle



- **Educate** a new generation of **business savvy ICT professionals**
- **Overcome fragmentation of Europe's excellence in ICT** to foster world-leading ICT innovations
- Create a **business-minded framework** for ICT innovations
- Establish a **network of world-class Co-Location Centers** to foster new ideas



# Visit of EU Commissioner Androulla Vassiliou



- EU Commissioner for Education, Mrs. Vassiliou, together with EIT Director, Mr. José Manuel Leceta, visited the two Berlin located CLCs of both Climate KIC and EIT ICT Labs,
- including presentations prepared by Siemens, DFKI and three Startups, as well as a visit to Telekom Innovation Laboratories.



# Members of the European Parliament visit Berlin Co-Location Centre



*(from right to left):* Sabine Verheyen (MEP), Joachim Zeller (MEP), Pilar del Castillo Vera (MEP), Dr. Heinrich Arnold (Chairman of German Node Steering Committee), Lambert van Nistelrooij (MEP) and Dr. Kai Rose (Deputy Node Director of EIT ICT Labs Germany).

# IT Security Conference in Berlin

## Co-Location Centre



(from left to right): Prof. Dr. Claudia Eckert, Klaus-Dieter Wolfenstetter, Martin Schallbruch, MEP Dr. Christian Ehler, Dr. Udo Bub, Dr. Alexander Dix



# **Educate and Innovate:**

## **Examples of EIT ICT Labs strategy implementation in Germany**

# X-Europe Outreach Programme



- **Provide opportunities for students and educators** in EIT-labelled education programmes
- **Activate startups** in by building strong ties to innovation programmes and contests
- **Collaborate with key people:** faculty members, researchers, innovation ecosystem actors
- **Organize events** that are linked to EIT ICT Labs activities
- **Create awareness of EIT** and its best practices



# Education programmes



## Education programmes

Master School: 2-year programme leading to a double Master's degree with mandatory Innovation & Entrepreneurship Minor

Summer Schools and Mobility programs: Students travel to kick-off events and summer schools to work on innovation & entrepreneurship.

EIT ICT Labs Doctoral School: Offering Doctoral students practical training and experience in a business development environment.



Master School



Doctoral School



Kick-off 2012



Summer School Eindhoven 2103

# Target Group: Competencies



## Organisational Skills

- Understanding of and familiarity with company specifics.

## Leadership Skills

- Motivational skills, role-model suitability
- Assertiveness, ability to delegate

## Methodological Skills

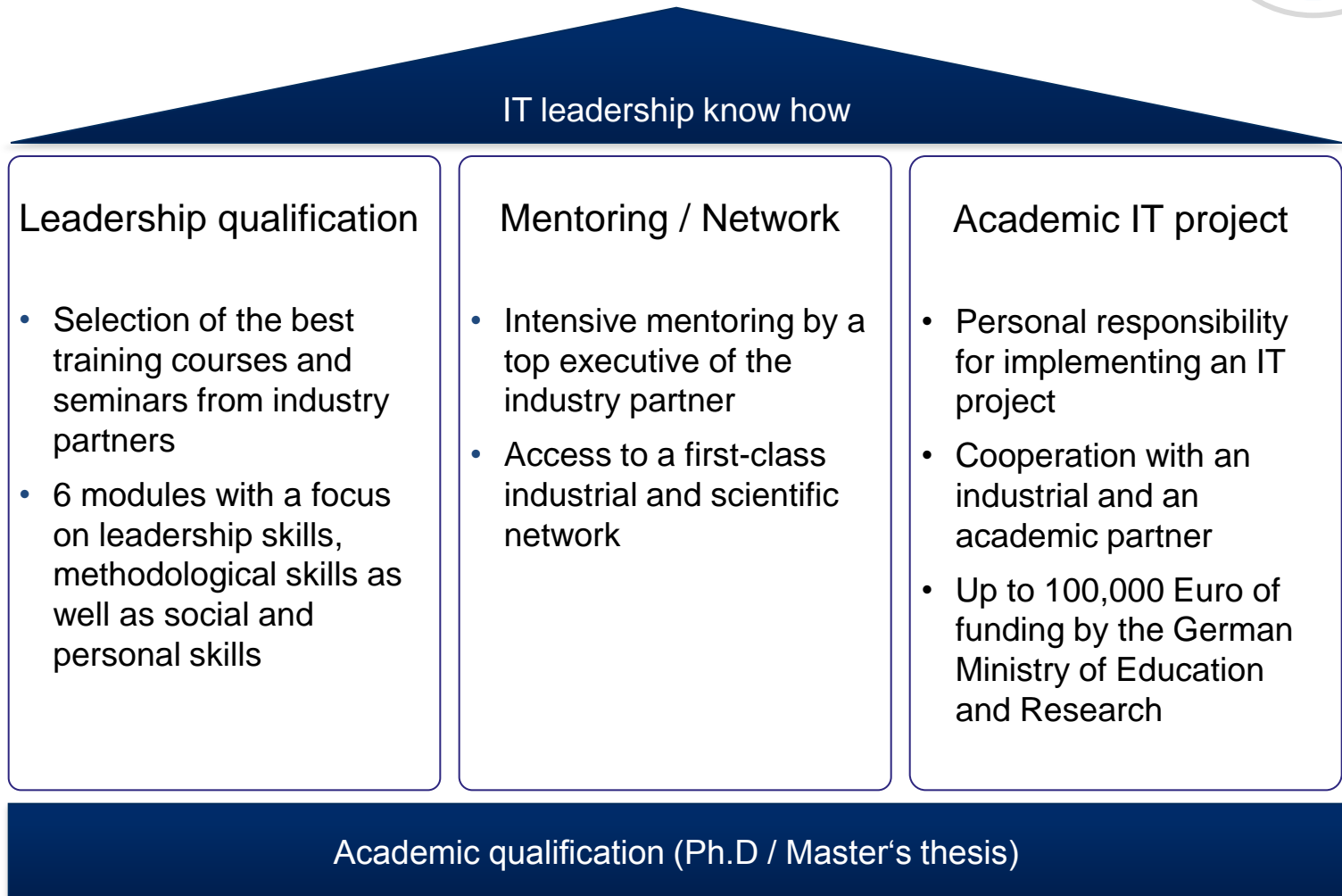
- Innovation Management
- Systems Thinking
- Project Management & Project Controlling
- Business Strategy
- Personnel Management & team-building
- Conduct of negotiations

## Social and personal skills

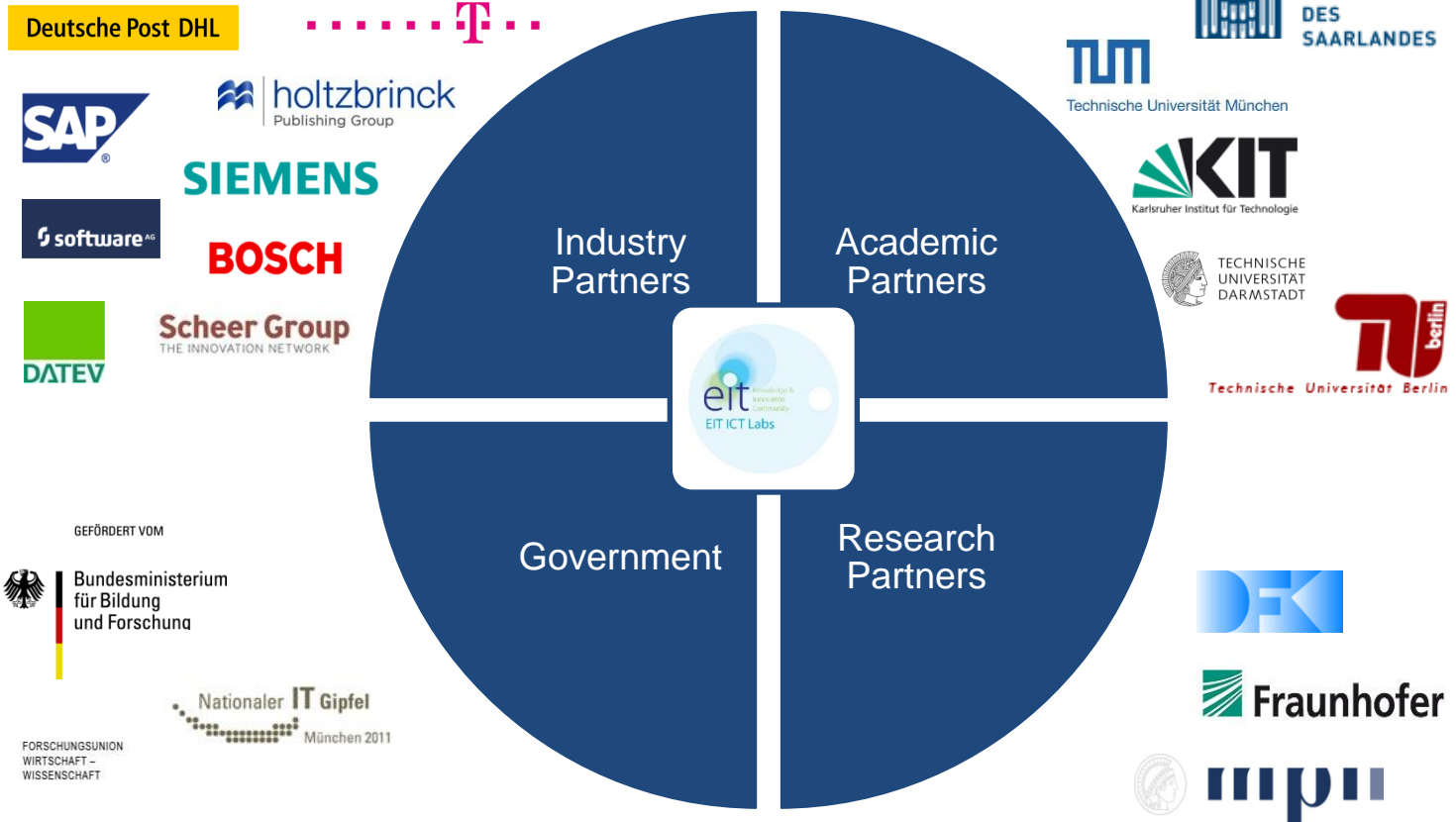
- Self-guidance
- Ability to work under pressure, empathy
- Teamwork, conflict management
- Communications skills
- persuasiveness

## Technical skills

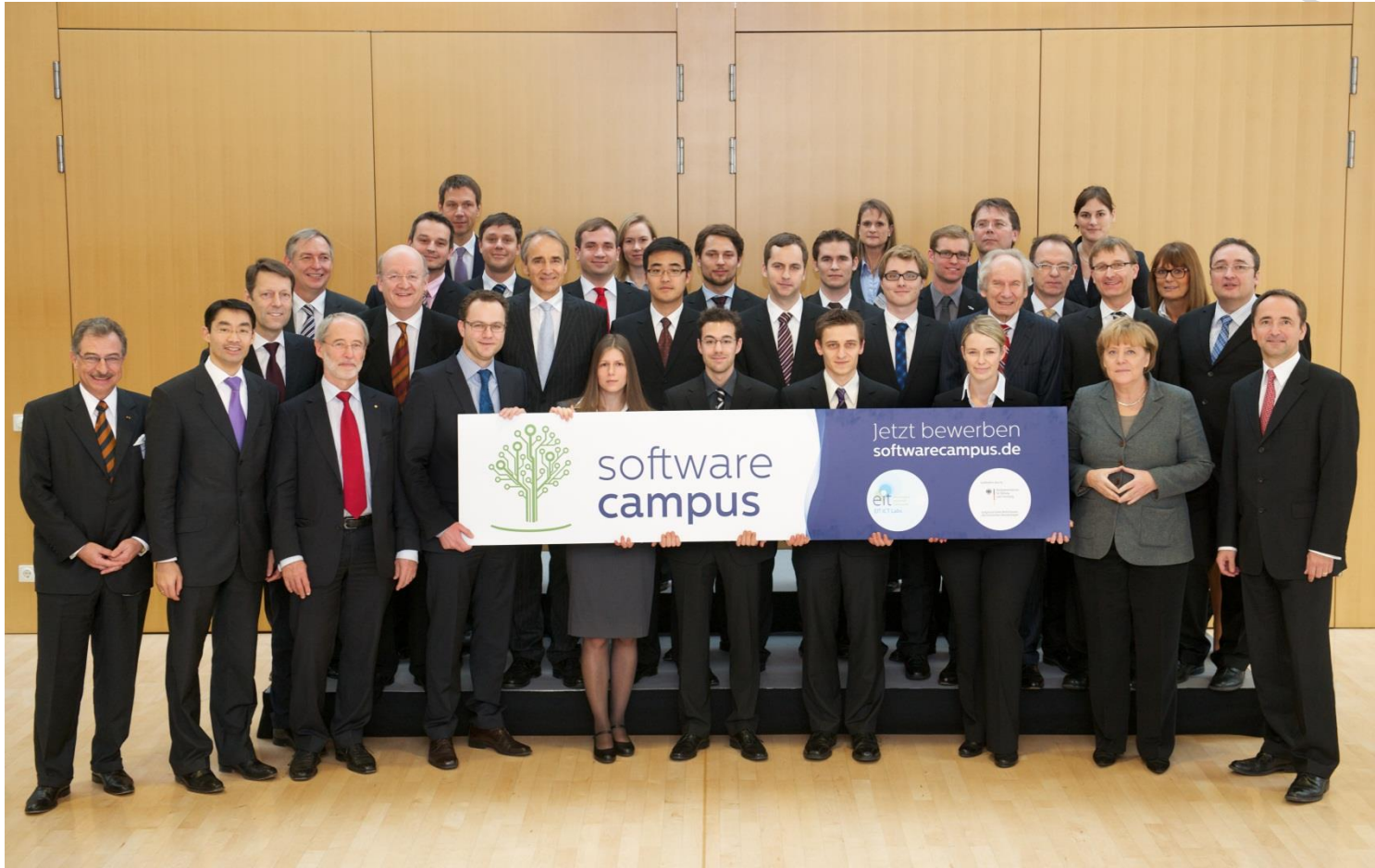
- Entry requirements of academic career and/or professional experience



# Software Campus partners



# History of Software Campus





# Thank you!