

# Technologie durch Kunst

## Neue Wege zu visionärer IT

*Erich Prem*  
*eutema GmbH*

**eu|te|ma**  
TECHNOLOGY MANAGEMENT

## FEAT – Art in early stage technology

Ancient unity of art, science, and technology

Recent rediscovery

1990 Palo Alto Research Labs –emphasis on invention

Increasing interest in art/science/innovation, e.g. creativity

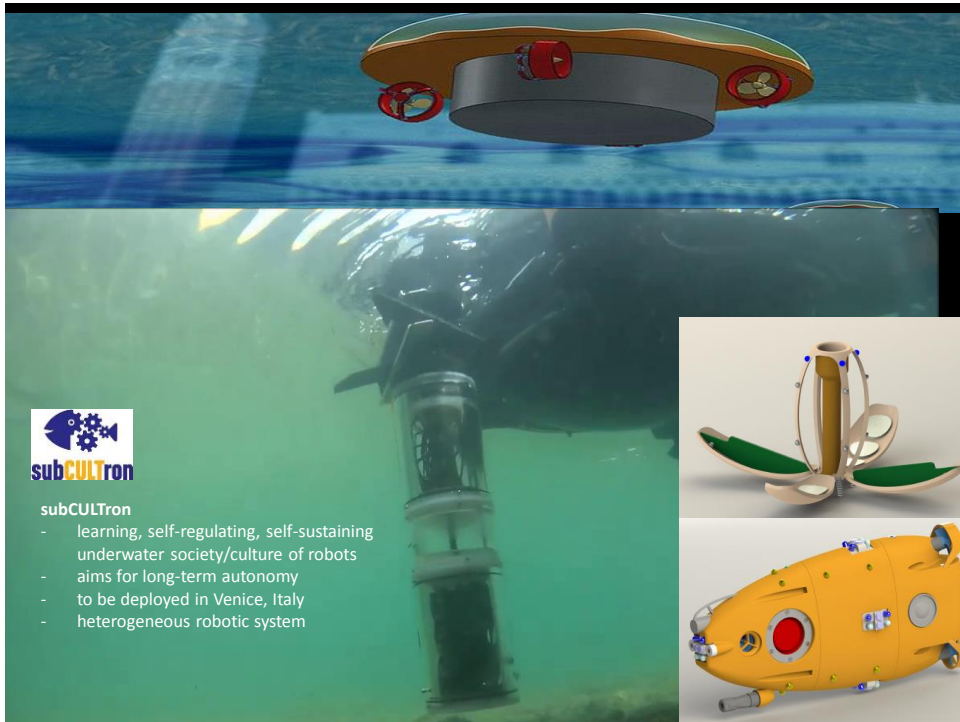
science fiction driving research  
(Root-Bernstein 2003)

artistic experimentation for research  
creation (Salter 2015)

artists in interdisciplinary teams  
(Reiter-Palmon et al, Goodman & Dingli 2013)

FEAT: Potential contribution of artists in very early stage technology research?

Art/science/technology collaboration residencies of up to 9 months selected from an open call for artists and a call for participation for FET projects.





*Robots in Distress.* Work impressions from the residency at TU Graz.  
Boredomresearch (Vicky Isley & Paul Smith)



*Robots in Distress.* From garbage robots to a robot simulation.  
Boredomresearch (Vicky Isley & Paul Smith)



## FEAT result: Art/technology Co-creation

### Collaboration

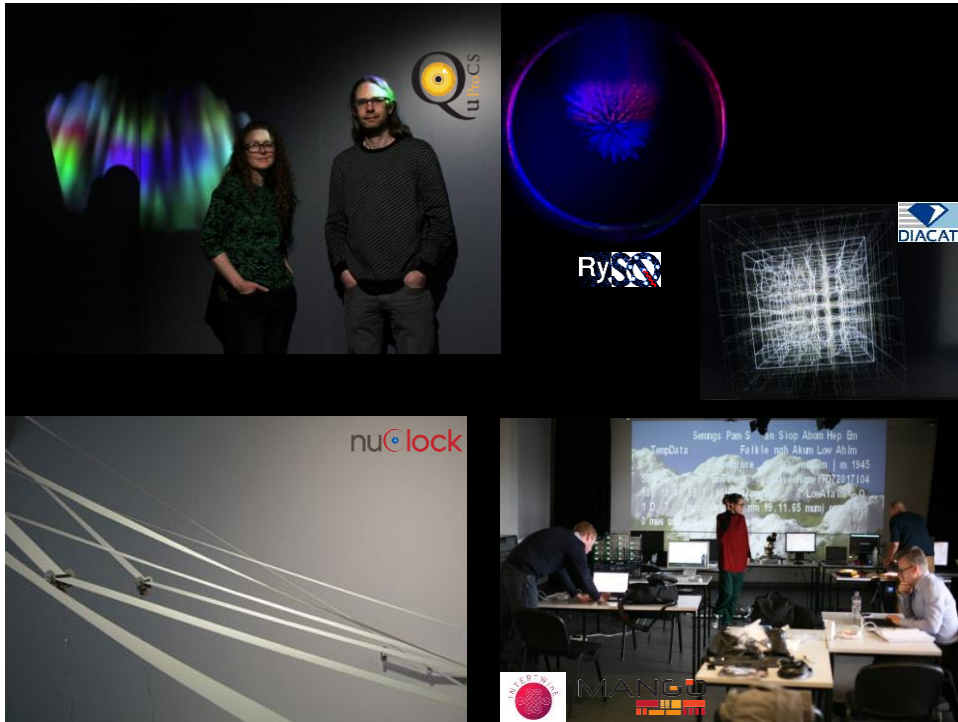
- longer connection
- trusted relation
- joint understanding

### Creativity

- routine breaking
- early adopters
- trials
- ideation for science

### PR

- materiality
- emotion
- sustained interest
- varying communities
- network expansion



## FEAT – Recommendations

6-9 month residencies with open format for meetings worked well

Intermediary results presentations useful

Invest in trusted relationships (time, workshops, exchange)

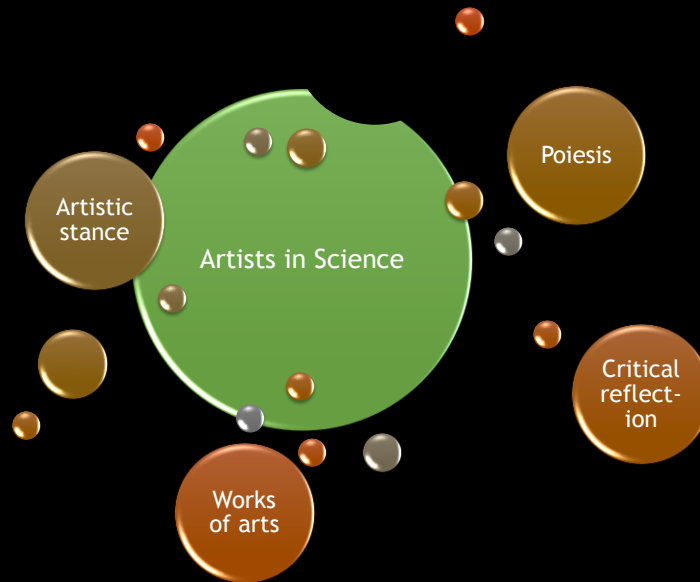
Low-cost, but travel and transport required

Logistic and curator support beneficial

Artwork curation required

Support learning of artists (instruments, techniques)

## FEAT – Artists for innovation?



## FEAT – Art residency service

### Artists in Science and Technology

Creative Input

Long-term visibility

Emotional perspective

Outreach

### Our offer

Advice on embedding artists in your project

Database with over 300 experienced artists

Administrative support

Regular workshops

New: Scientists in residence

Special thanks to Lucas Evers from the Waag Society, Anna Dumitriu from the Institute of Unnecessary Research, Vickey Isley & Paul Smith from boredomresearch and the EC.

**eu|te|ma**  
TECHNOLOGY MANAGEMENT

 **waag society**  
Institute for art, science and technology

**YOURis.com**  
EUROPEAN RESEARCH MEDIA CENTER

Future Emerging **Art** and Technology

H2020-EU.1.2.1. - FET Open 686527



[www.feat-art.eu](http://www.feat-art.eu)

## Contact

Erich Prem, eutema

[prem@eutema.com](mailto:prem@eutema.com)

[www.eutema.com](http://www.eutema.com)

**eu|te|ma**  
TECHNOLOGY MANAGEMENT